

LITHIUM BATTERY

Primary lithium batteries ER2450

**3.6V Primary lithium-thionyl chloride
(Li-SOCl₂) Energy type
bobbin cell**

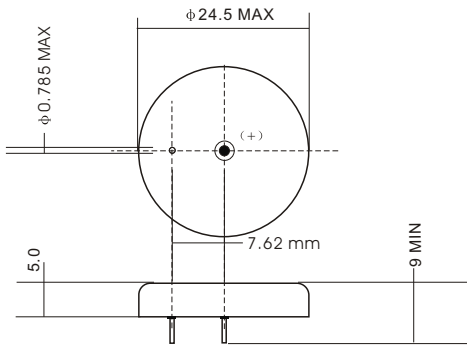
For low drain / long time applications requesting superior voltage response in -40°C~+125°C environments.

Cell size references

Electrical characteristics (typical values relative to cells stored for one year or less at +30°C max.)	
Nominal capacity (at 0.5mA +20°C 2.0V cut off. The capacity restored by the cell varies according to current drain, temperature and cut off).	0.5Ah
Open circuit voltage (at +20°C)	3.66V
Nominal voltage (at 0.5mA +20°C)	3.6V
Pulse capability: Typically up to 10 mA (10mA/0.1 second pulses, drained every 2 mn at +20°C from undischarged cells with 10 μA base current, yield voltage readings above 3.0V. The readings may vary according to the pulse characteristics, the temperature, and the cell's previous history. Fitting the cell with a capacitor may be recommended in severe conditions. Consult pbq)	
Max. Continuous current	4mA
Max. Pulse current	10mA
Storage (recommended) (for more severe conditions, consult pbq)	+30°C max
Operating temperature range (Operation above ambient T may lead to reduced capacity and lower voltage readings at the beginning of pulses. Consult pbq)	-40°C / +125°C
Physical characteristics	
Diameter (max)	24.5mm(0.98 in)
Height (max)	5.5mm(0.22 in)
Typical weight	10.5g(0.187oz)

LITHIUM BATTERY

ER2450



Unit:mm

Key features

- ▶ High and stable operating voltage
- ▶ Superior drain capability
- ▶ Low self-discharge rate (less than 1% after 1year of storage at +20°C)
- ▶ Hermetic glass-to-metal sealing
- ▶ Notch technology for safety vent is recommended
- ▶ Non-flammable electrolyte

Main applications

- ▶ Radiocommunication and other military applications
- ▶ Alarms and security systems
- ▶ Beacons and emergency location transmitters
- ▶ GPS
- ▶ Metering systems
- ▶ Sonobuoys
- ▶ LED lighting applications
- ▶ Others

Storage

- ▶ The storage area should be clean, cool (not exceeding +30°C), dry and ventilated.

Warning

- ▶ Do not use if the battery casing was mangled.
- ▶ Don't use different models of battery in series.
- ▶ Do not try to recharge.

Characteristic curves

